

# Pollinator Garden Guide

Version 1.4

Researched and prepared by Kim Bonner



**A Two-Spotted Bumblebee at our Pollinator Garden**  
**Photo by Don Taylor**



Be sure to check out our website ([bathgardeningclub.ca](http://bathgardeningclub.ca)), our Facebook page (Bath Gardening and Horticultural Society) and the Sunday Market in Bath (<https://sundaymarketinbath.com>).

# Table of Contents

<i>Introduction</i> .....	3
<i>Pollinator Garden Plan</i> .....	6
<i>Plant Inventory</i> .....	8
Hardy Geranium (1).....	9
Swamp Milkweed (2).....	10
Swamp Rose Mallow (3).....	11
Sundrops (4).....	12
New England Aster (5).....	13
Ohio Goldenrod (6).....	14
Prairie Coneflower (7).....	15
Wild Bergamot (8).....	16
Chives (9).....	17
Lanceleaf Coreopsis (10).....	18
Anise Hyssop (11).....	19
Purple Coneflower (12).....	20
Garlic Chives (13).....	21
Eastern Pasqueflower (14).....	22
Dill (15).....	23
Dense Blazing Star (16).....	24
Butterfly Weed (17).....	25
Catmint (18).....	26
Foxglove Beardtongue (19).....	27
False Sunflower (20).....	28
Virginia Spiderwort (21).....	29
Autumn Joy Sedum (22).....	30
Prairie Smoke (23).....	31
Smooth Blue Aster (24).....	32
Little Bluestem Grass (25).....	33
Black-eyed Susan (26).....	34
Serviceberry (27).....	35
False Indigo (28).....	36


<b>Common Milkweed (29)</b> .....	<b>37</b>
<b>Blanket Flower (30)</b> .....	<b>38</b>
<b>Red Columbine (31)</b> .....	<b>39</b>
<b>Bleeding Heart (32)</b> .....	<b>40</b>
<b>Eastern Redbud (33) – Minnesota Strain</b> .....	<b>41</b>
<b>Ruby Summersweet (34)</b> .....	<b>42</b>
<b><i>Appendix A - Resources</i></b> .....	<b>43</b>
<b><i>Appendix B - Maintenance Schedule</i></b> .....	<b>44</b>

# Introduction

## Purpose

- The purpose of this guide is to provide BGC volunteers with a guide for weeding, dividing, watering and maintaining the garden. Thanks to all the volunteers who care for it!

## Guiding principles for the Pollinator Garden:

- Stocked with plants that are beneficial to pollinators by providing pollen and nectar, hosting caterpillars, and/or supplying nesting sites.
  - Most in this guide are native (denoted by ) but there is a sprinkling of non-native plants that provide pollinator support
  - While most are perennials, this guide also includes several beneficial herbs, annuals, grasses and trees
- Supports a variety of pollinators – bees, wasps, butterflies, moths, hoverflies, hummingbirds, beetles, and other beneficial insects
- Supports pollinators through all 4 seasons:
  - plants that bloom at various intervals, providing pollen and nectar throughout the growing season
  - plants with various heights, colours and scents, to attract a range of pollinators
  - plants that host pollinators' larvae and caterpillars
  - plant material that provides protected places for overwintering
- No use of toxic herbicides, pesticides or fungicides
- When sourcing plant material for the garden, ensure it is labelled "neonic-free" (neonicotinoid insecticides are toxic to bees and other pollinators)
- No mulch, which prevents solitary bees from making nests

- Is a habitat first and a garden second when it comes to maintenance activities, e.g.
  - leaving last season's plant stalks in place to provide nesting cavities for bees
  - waiting until after the blossoms on apple trees in the area fade as an indicator to start spring maintenance activities

### **Resources:**

Please see Appendix A for a list of sites that were consulted in the preparation of this document.

### **Maintenance Schedule:**

Please see Appendix B for a summary of garden maintenance activities organized by season.

## Version Control

Version	Date	Author	Changes
1.4	April 2026	Kim Bonner	<ul style="list-style-type: none"> <li>• Replaced most of the Wikipedia-sourced plant photos from with ones taken in our club's Pollinator Garden</li> <li>• Added club's new logo</li> <li>• Added hoverfly icon</li> <li>• Added Blanket Flower, Red Columbine, Bleeding Heart, Common Milkweed, Ruby Summersweet, and Eastern Redbud to inventory</li> <li>• Added a pollinator-safe recipe in the Black-Eyed Susan profile for controlling leaf spot</li> <li>• Added info to the 3 types of milkweed plants on how to treat milkweed aphids.</li> </ul>
1.3	12-Apr - 2025	Kim Bonner	<ul style="list-style-type: none"> <li>• Corrected punctuation, typographical errors and formatting issues</li> </ul>
1.2	8-Apr-2025	Kim Bonner	<ul style="list-style-type: none"> <li>• In the Introduction, clarified that there are both native and non-native plants in the garden.</li> <li>• Added a comment to the Introduction section that purchased plant material should be "neonic-free", which is toxic to pollinators.</li> <li>• Added a Maintenance Schedule in Appendix B, with activities organized by spring, summer, and fall</li> <li>• Added Little Bluestem and Serviceberry, False Indigo</li> <li>• Added more Wildlife icons– is a fragrant flower, is enjoyed by moths, is a native plant, provides overwintering habitat, rabbits are fond of it, annual. Added a legend for the icons</li> <li>• Added the Wikimedia licensing info to photo credits.</li> <li>• Noted that as of April 4, 2025, all permissions had been received from the sources in the References section.</li> <li>• Included a pollinator-safe recipe in Bergamot and Zinnia profiles for eradicating mildew.</li> <li>• Noted that Swamp Rose Mallow, Purple Coneflower and Autumn Joy Sedum also have pithy/hollow stems for stem-nesting bees.</li> </ul>
1.1	6-Feb-2025	Kim Bonner	Fixed pagination issues
1.0	1-Feb-2025	Kim Bonner	Issued

# Pollinator Garden Plan

In 2021, Pat Haslett, a former master gardener, drew up a plan for our pollinator garden using mostly native plants. The plants were carefully selected to attract a wide range of pollinators by considering colour, fragrance, bloom time and height.

In the spring of 2024, an inventory was taken. 10 plants were restocked, bringing it back to its full complement of 25 varieties when it was first established. In addition, some relocation activity took place:

- Relocated plants susceptible to mildew in an area with more access to air and light
- Moved delicate plants away from enthusiastic growers
- Installed chicken wire cages around plants that rabbits find particularly tasty
- Began eradicating non-native, invasive woundwort

On the next page, you'll find the most recent layout of the Pollinator Garden<sup>1</sup>. The numbers next to the plants correspond to the numbers on the lovely pallet art situated at the north end of the garden, which was painted by Bonnie Freidenberg. The plants in this document are ordered by their assigned number on the pallet art.

The blue drops of water on the diagram layout indicate how much water the plant requires:

- 1 drop – water sparingly
- 2 drops – light watering, when the soil is dry
- 3 drops – deep watering, 2-3 times a week when temperatures are hot

A note to the watering team: please remember to replenish the water in the butterfly puddler and bee waterer, which are located at the west end of the garden.

---

<sup>1</sup>

BGC BUGTEL  
2024



# Plant Inventory

## Legend

In the plant descriptions that follow, you'll see some icons under the Wildlife subheading, which have the following meanings:



Bees love it



Butterflies love it



Hoverflies love it



Moths love it



Hummingbirds love it



Wasps love it



Beetles love it



Amphibians love it



Is a fragrant flower



Hosts butterfly and/or moth larvae



Birds enjoy the seeds



Is a Native plant



Provides overwintering habitat



Rabbits find these plants particularly tasty

**A**

Annual (assume all others are perennials)

## Hardy Geranium (1)

<b>Bot. Name</b>	Geranium sp	<b>Sun Exposure</b>	Sun to Partial Shade
<b>Mature Size</b>	1-1.5 m H x 0.5-1 m W	<b>Flower Colour</b>	Blue
<b>Bloom Time</b>	April to June		

**Watering Instructions:** Water weekly, but only at root level to prevent fungal disease.

**Spring Maintenance:** Apply compost.

**Summer Maintenance:** After flowering, shear the plants back to basal growth (7-12 cm) to encourage reblooming.

**Fall/Winter Maintenance:** As winter approaches, cut off stems to just above ground level to eliminate fungal spores. If the centre is dying out, then it's time to divide into halves or quarters using a sharp spade.

**Wildlife:**  



Hardy Geranium Plant  
Photo by Kim Bonner



Two-spotted Bumblebee on Hardy Geranium  
Photo by Don Taylor

## Swamp Milkweed (2)

**Bot. Name** Asclepias incarnata  
**Mature Size** 0.5-1.5 m H x .6-.9 m W  
**Bloom Time** June to August

**Sun Exposure** Full Sun  
**Flower Colour** Pink

**Watering Instructions:** Moist to wet

**Spring Maintenance:** No fertilizing required. Cut back dead flower stalks leaving stem stubble of varying height, from 20 to 60 cms, to provide nest cavities for bees. New growth will gradually hide the stem stubble.

**Summer Maintenance:** To prolong blooming period, deadhead spent milkweed flower heads in early summer. Keep an eye out for milkweed aphids, bright yellow insects with black legs. If you see them, squish them by placing affected parts of the milkweed plant between thumb and forefinger and drag along the stem and/or snip off heavily infested leaves and stems.

**Fall/Winter Maintenance:** Their hollow stems are used by nesting bees, so leave the stems in place. Leave some seed heads for the birds and small animals who use their natural fibres and seed fluff in their nests. This plant does not like to be moved or divided due to its long taproot.

**Wildlife:** 



Photo Credit: R. A. Nonenmacher, CC BY-SA 4.0 <<https://creativecommons.org/licenses/by-sa/4.0/>>, via Wikimedia Commons

## Swamp Rose Mallow (3)

**Bot. Name** Hibiscus moscheutos

**Mature Size** 1-2 m H x 0.5-1.5 m W

**Bloom Time** Summer to fall

**Sun Exposure** Full Sun

**Flower Colour** Pink

**Watering Instructions:** Once the plant is actively growing, it needs a deep watering two or three times per week during hot weather.

**Spring Maintenance:** Cut back dead flower stalks leaving stem stubble of varying height, from 20 to 60 cms, to provide nest cavities for bees. New growth will gradually hide the stem stubble. Pinch back growing tips when they reach 20 cm and again at 30 cm if bushy plants are desired.

**Summer Maintenance:** Apply fertilizer monthly during the growing season.

**Fall/Winter Maintenance:** Their hollow stems are used by nesting bees, so leave the stems in place.

**Wildlife:**     



Swamp Rose Mallow Plant  
Photos by Kim Bonner



Common Eastern Bumblebee on Rose Mallow

## **Sundrops (4)**

**Bot. Name** Oenothera fruticosa

**Mature Size** 0.6 m H x 0.6 m W

**Bloom Time** May June

**Sun Exposure** Sun to Partial Shade


**Flower Colour** Yellow

**Watering Instructions:** Water sparingly

**Spring Maintenance:** None

**Summer Maintenance:** None, except to remove plants that have spread outside of desired area.

**Fall/Winter Maintenance:** Leave seedheads in place for overwintering birds.

**Wildlife:** 



Sundrops Plant  
Photo by Kim Bonner

## New England Aster (5)


<b>Bot. Name</b>	Symphyotrichum novae-angliae		
<b>Mature Size</b>	1-2 m H x 0.5 to 1 m W	<b>Sun Exposure</b>	Sun to Partial Shade
<b>Bloom Time</b>	September to October	<b>Flower Colour</b>	Purple

**Watering Instructions:** Water only when rainfall doesn't reach 2.5 cm per week.

**Spring Maintenance:** Add compost. Cut back dead flower stalks leaving stem stubble of varying height, from 20 to 60 cms, to provide nest cavities for bees. New growth will gradually hide the stem stubble.

**Summer Maintenance:** Pinching back stems every few weeks will promote more compact growth but stop before end of July.

**Fall/Winter Maintenance:** Remove seedheads to prevent self-seeding – except for a few for overwintering birds - but leave tall pithy stems in place for nesting bees. Divide when needed by sectioning off stems to make 15 – 20 cm diameter divisions with a group of leaves and roots.

**Wildlife:** 



New England Aster  
Photos by Kim Bonner



Common Eastern Bumblebee on NE Aster

## Ohio Goldenrod (6)

**Bot. Name** Solidago ohioensis

**Mature Size** 1 m H x 0.5 m W

**Bloom Time** August to Sept

**Sun Exposure** Full Sun

**Flower Colour** Yellow

**Watering Instructions:** Mature goldenrod plants are drought tolerant and rarely need supplemental watering except when rainfall is scarce.

**Spring Maintenance:** Cut back dead flower stalks leaving stem stubble of varying height, from 20 to 60 cms, to provide nest cavities for bees. New growth will gradually hide the stem stubble. Does not need to be fertilized.

**Summer Maintenance:** Deadheading spent flower heads will prolong blooms into the fall.

**Fall/Winter Maintenance:** Leave tall pithy stems in place for nesting bees. Leave a few seed heads for overwintering birds. Divide every 2 to 5 years as needed.

**Wildlife:** 



Hairy-banded Miner Bee on Goldenrod  
Photo by Kim Bonner

## Prairie Coneflower (7)

**Bot. Name** Ratibida columnifera

**Mature Size** 1 m H x -.5 m W

**Bloom Time** Summer to Fall

**Sun Exposure** Full Sun

**Flower Colour** Yellow

**Watering Instructions:** Water deeply but infrequently to avoid root rot. Avoid getting the leaves wet.

**Spring Maintenance:** Cut back in early spring.

**Summer Maintenance:** None

**Fall/Winter Maintenance:** Leave seedheads to ripen for winter birds. Divide every few years in spring or fall by cutting the root mass into 2-3 pieces.

**Wildlife:** 



Prairie Coneflower Plant  
Photos by Kim Bonner



Margined Calligrapher Hover Fly on Coneflower

## Wild Bergamot (8)

<b>Bot. Name</b>	Monarda fistulosa	<b>Sun Exposure</b>	Sun to Partial Sun
<b>Mature Size</b>	0.5 to 1 m H x 0.5 to 1 m W	<b>Flower Colour</b>	Pink
<b>Bloom Time</b>	July to September		

**Watering Instructions:** Water deeply but infrequently to avoid root rot. To avoid powdery mildew, do not get water on the leaves and flowers.

**Spring Maintenance:** Add compost in early spring, if desired. Cut back dead flower stalks leaving stem stubble of varying height, from 20 to 60 cms, to provide nest cavities for bees. New growth will gradually hide the stem stubble. It also needs good air circulation, or it can get powdery mildew. If mildew occurs, spray plants with a 40/60 ratio of milk to water on a sunny day.

**Summer Maintenance:** Deadhead first set of faded blooms to encourage plant to rebloom.

**Fall/Winter Maintenance:** Leave some seedheads to ripen for winter birds and remove the rest, leaving the tall hollow stems for use by nesting bees. Divide every 2-3 years to maintain its vigor.

**Wildlife:** 



Photo credit: [https://commons.wikimedia.org/wiki/File:Monarda\\_didyma\\_00.jpg](https://commons.wikimedia.org/wiki/File:Monarda_didyma_00.jpg)  
Takkk, CC BY-SA 3.0 <<https://creativecommons.org/licenses/by-sa/3.0/>>, via Wikimedia Commons

## Chives (9)

<b>Bot. Name</b>	Allium sp	<b>Sun Exposure</b>	Full Sun to Part Shade
<b>Mature Size</b>	0.5 m H x 0.5 m W	<b>Flower Colour</b>	Purple
<b>Bloom Time</b>	Spring to Summer		

**Watering Instructions:** Water when the top 1 cm of soil is dry.

**Spring Maintenance:** Add compost.

**Summer Maintenance:** Once flowers have faded, cut plant down by half.

**Fall/Winter Maintenance:** Once dormant, cut back to ground level. Divide clumps as needed.

**Wildlife:** 



Branded Grass Skipper Butterfly on Chives  
Photo by Don Taylor

## Lanceleaf Coreopsis (10)

**Bot. Name** Coreopsis lanceolata  
**Mature Size** up to 1 m H x 0.5 m W  
**Bloom Time** May to August

**Sun Exposure** Full Sun  
**Flower Colour** Yellow

**Watering Instructions:** Drought tolerant. Moist to Dry. Keep the soil moist to a depth of 2.5 cm.

**Spring Maintenance:** Cut back to 15 cm high in spring before new growth begins. This plant does not require fertilizer.

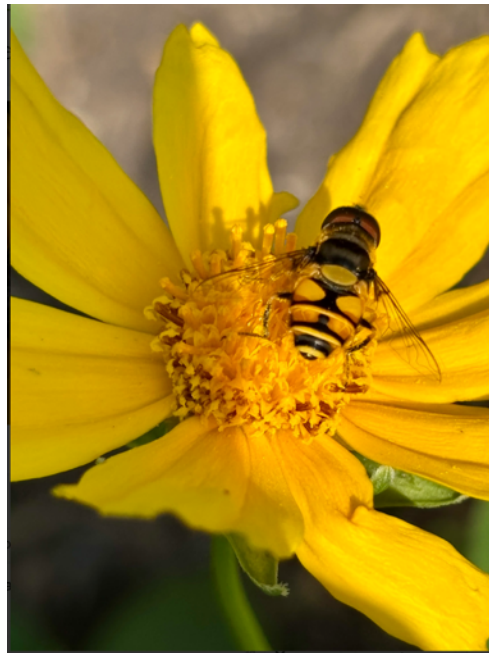
**Summer Maintenance:** Deadheading spent blooms will help control self-seeding and encourage additional blooms. Cut back hard if plant becomes too sprawly. Divide if plant has weakened or has fewer flowers than usual.

**Fall/Winter Maintenance:** None

**Wildlife:** 



Lanceleaf Coreopsis Plant  
Photos by Kim Bonner



Transverse-banded Flower Fly on Coreopsis

## **Anise Hyssop (11)**

**Bot. Name** Agastache foeniculum

**Mature Size** 0.5-1.5 m H x 0.5-m W

**Bloom Time** Summer to Fall

**Sun Exposure** Full Sun

**Flower Colour** Lavender

**Watering Instructions:** Drought tolerant, so probably don't need to be watered unless leaves start to droop.

**Spring Maintenance:** Add compost. Cut back dead flower stalks leaving stem stubble of varying height, from 20 to 60 cms, to provide nest cavities. New growth will gradually hide the stem stubble.

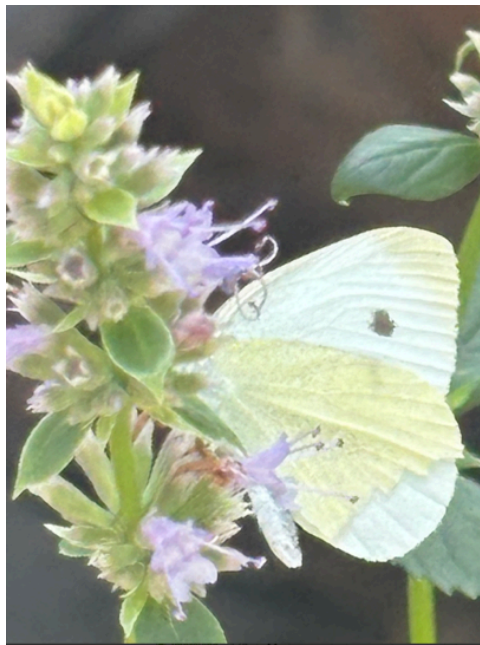
**Summer Maintenance:** Prune deeply after 1<sup>st</sup> flush to 1/3 of plant height.

**Fall/Winter Maintenance:** Deadhead blooms to prevent prolific self-seeding but leave the tall hollow stems in place for use by nesting bees. Water well just before it dies back in fall. Dividing anise hyssop every 3-5 years can help prevent the center of the plant from dying out and rejuvenate the entire plant.

**Wildlife:** 



European Wool Carder Bee (non-native)  
Photos by Kim Bonner



Cabbage White Butterfly on Anise Hyssop

## Purple Coneflower (12)

<b>Bot. Name</b>	Echinacea purpurea	<b>Sun Exposure</b>	Full Sun
<b>Mature Size</b>	0.5-1.5 m H x up 0.5 m W	<b>Flower Colour</b>	Pinkish-purple
<b>Bloom Time</b>	June to August		

**Watering Instructions:** When the top inch of soil is dry, water thoroughly.

**Spring Maintenance:** Add compost. Cut back dead flower stalks leaving stem stubble of varying height, from 20 to 60 cms, to provide nest cavities for bees. New growth will gradually hide the stem stubble.

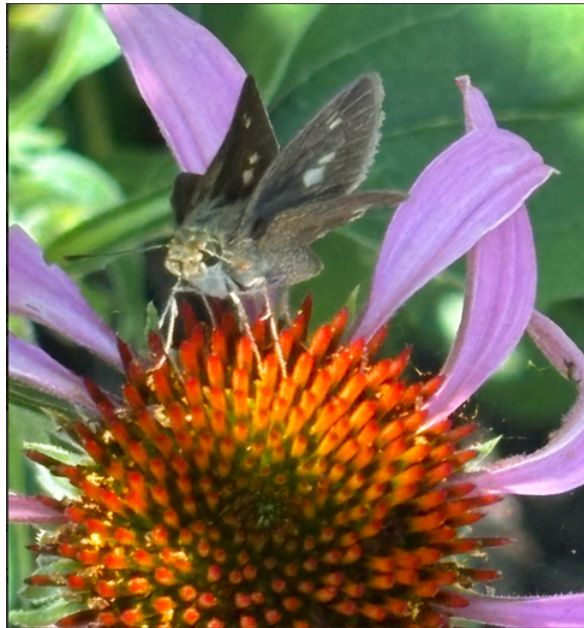
**Summer Maintenance:** Deadheading spent flowers in June and July will keep the plant blooming all summer. Plant needs good air circulation so make sure it's not crowded. Thin out stems if needed.

**Fall/Winter Maintenance:** Leave last set of spent flowers standing throughout the winter months to feed the birds. Leave the tall pithy stems in place for use by nesting bees. If needed, divide by cutting the root mass into 2-3 pieces and replanting.

**Wildlife:** 



Purple Coneflower Plant  
Photos by Kim Bonner



Grass Skipper Butterfly on Purple Coneflower

## **Garlic Chives (13)**

<b>Bot. Name</b>	Allium sp	<b>Sun Exposure</b>	Full Sun
<b>Mature Size</b>	up to 0.5 m H x W	<b>Flower Colour</b>	White
<b>Bloom Time</b>	Spring to Summer		

**Watering Instructions:** Water when the top 1 cm of soil is dry.

**Spring Maintenance:** Add compost.

**Summer Maintenance:** Once flowers have faded, cut plant down by half.

**Fall/Winter Maintenance:** Once dormant, cut back to ground level. Divide clumps and replant as needed.

**Wildlife:**    



Photo credit: [https://commons.wikimedia.org/wiki/File:Allium\\_tuberosum\\_kz01.jpg](https://commons.wikimedia.org/wiki/File:Allium_tuberosum_kz01.jpg)  
Krzysztof Ziarnik, Kenraiz, CC BY-SA 4.0 <<https://creativecommons.org/licenses/by-sa/4.0/>>, via Wikimedia Commons

## Eastern Pasqueflower (14)

**Bot. Name** Pulsatilla patens  
**Mature Size** up to 0.3 m H x W  
**Bloom Time** April to June

**Sun Exposure** Full Sun  
**Flower Colour** Red

**Watering Instructions:** Water at the base of plant. Does not like wet feet.

**Spring Maintenance:** Fertilize in spring, but don't overdo it. Cut back to the ground level before new growth emerges. The long tap root of Pasqueflower makes it difficult to move or divide.

**Summer Maintenance:** None

**Fall/Winter Maintenance:** Do not cut back. Dried seedheads and foliage add interest to the winter garden.

**Wildlife:**   



Eastern Pasque Flower  
Photos by Kim Bonner

## Dill (15)

<b>Bot. Name</b>	Anethum sp	<b>Sun Exposure</b>	Full Sun
<b>Mature Size</b>	up to 1.5 m H x 1 m W	<b>Flower Colour</b>	Yellow
<b>Bloom Time</b>	Late summer to fall		

**Watering Instructions:** Water at the base. Plant does not like wet feet.

**Spring Maintenance:** No need to fertilize. Pluck buds and prune upper leaves for a bushier plant.

**Summer Maintenance:** Leave some flowers and seedheads for reseeding and deadhead the rest.

**Fall/Winter Maintenance:** Tidy up by cutting back stems after dormancy but leave some stalks with seedheads for reseeding.

**Wildlife:**    



Photo credit: [https://commons.wikimedia.org/wiki/File:Illustration\\_Anethum\\_graveolens\\_clean.jpg](https://commons.wikimedia.org/wiki/File:Illustration_Anethum_graveolens_clean.jpg)  
Illustration\_Anethum\_graveolens0.jpg; Prof. Dr. Otto Wilhelm Thomé  
derivative work: Aroche, Public domain, via Wikimedia Commons

## Dense Blazing Star (16)

<b>Bot. Name</b>	Liatris spicata	<b>Sun Exposure</b>	Full Sun
<b>Mature Size</b>	up to 1.5 m H x 0.5 m W	<b>Flower Colour</b>	Purple
<b>Bloom Time</b>	July to November		

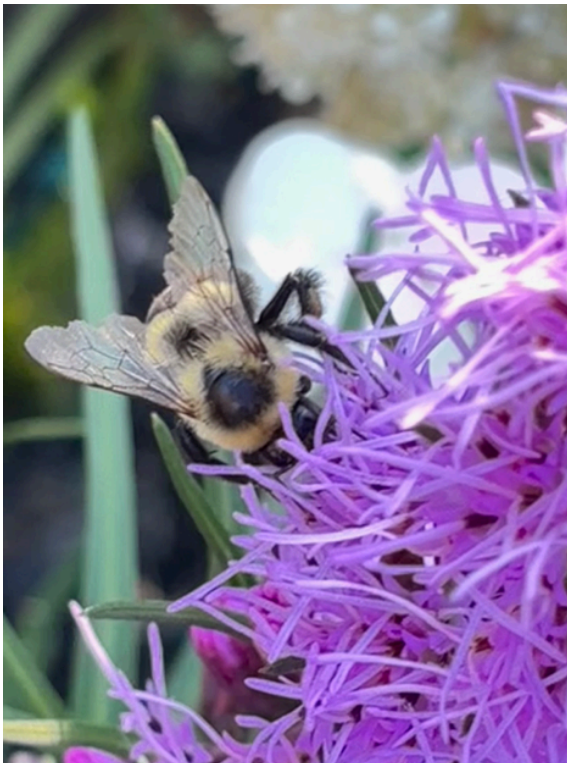
**Watering Instructions:** 2.5 cms of water per week

**Spring Maintenance:** Cut back dead flower stalks leaving stem stubble of varying height, from 20 to 60 cms, to provide nest cavities for bees. New growth will gradually hide the stem stubble. Requires good air circulation.

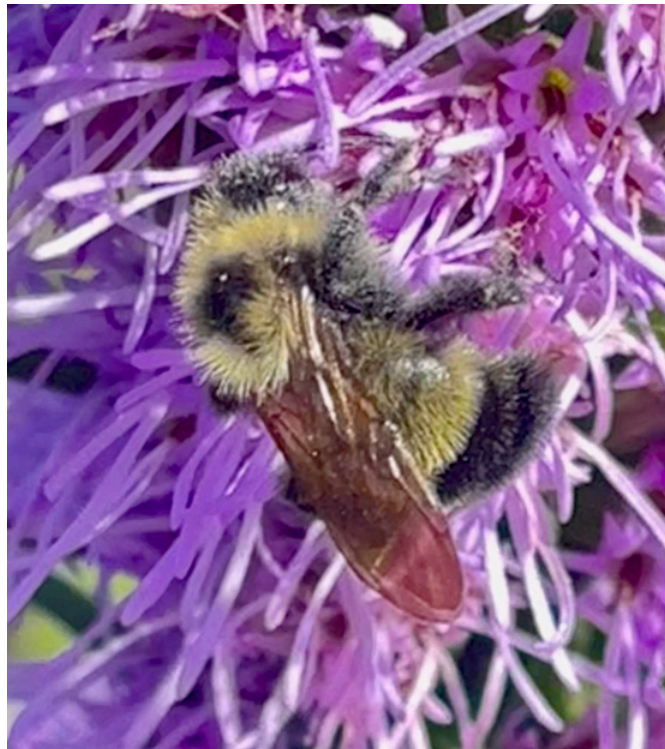
**Summer Maintenance:** None

**Fall/Winter Maintenance:** Their pithy stems are used by nesting bees and overwintering birds enjoy the seeds, so leave them in place. Divide if needed by digging up the root corms, separating them and replanting.

**Wildlife:** 



Common Eastern Bumblebee on Liatris  
Photos by Kim Bonner



Lemon Cuckoo Bumblebee on Liatris

## **Butterfly Weed (17)**

<b>Bot. Name</b>	Asclepias tuberosa	<b>Sun Exposure</b>	Sun to Partial Shade
<b>Mature Size</b>	up to 1 m H x .5 m W	<b>Flower Colour</b>	Yellow-Orange
<b>Bloom Time</b>	June to September		

**Watering Instructions:** Water mature plants sparingly when soil is dry.

**Spring Maintenance:** Cut back dead flower stalks leaving stem stubble of varying height, from 20 to 60 cms, to provide nest cavities. New growth will gradually hide the stem stubble. Do not fertilize. They do not do well with moving or dividing since they have a long taproot.

**Summer Maintenance:** To prolong the blooming period, deadhead spent milkweed flower heads only in early summer by removing the stalk at the first junction of the leaves below the flower. Keep an eye out for milkweed aphids, bright yellow insects with black legs. If you see them, squish them by placing affected parts of the milkweed plant between thumb and forefinger and drag along the stem and/or snip off heavily infested leaves and stems.

**Fall/Winter Maintenance:** Their hollow stems are used by nesting bees, so leave the stems in place. Leave a few seed heads for the birds and small animals who use their natural fibres and seed fluff in their nests.

**Wildlife:** 



Butterfly Weed Plant  
Photos by Kim Bonner

## Catmint (18)

<b>Bot. Name</b>	Nepeta sp	<b>Sun Exposure</b>	Full Sun to Part Shade
<b>Mature Size</b>	up to 1 m H x W	<b>Flower Colour</b>	Blue/purple
<b>Bloom Time</b>	Summer to Fall		

**Watering Instructions:** Drought tolerant so only water in extreme heat/dry spells. If leaves and flowers are drooping or brown, the plant needs water.

**Spring Maintenance:** Does not need to be fertilized.

**Summer Maintenance:** Once stems become leggy and flop open, give the plants a good cutting back which may result in a second bloom.

**Fall/Winter Maintenance:** Cut top growth down to 10-15 cm above the ground. To divide, dig up the plant in early spring or fall; break up clump into pieces, each with plenty of roots and shoot buds, and replant.

**Wildlife:**   



Catmint Plant  
Photo by Kim Bonner



Bicolor Sweat Bee on Catmint  
Photo by Don Taylor

## **Foxglove Beardtongue (19)**

**Bot. Name** Penstemon Digitalis

**Mature Size** 1.5 m t x 0.5 m W

**Bloom Time** May to July

**Sun Exposure** Sun to Partial Shade

**Flower Colour** White

**Watering Instructions:** 2.5 cm of water per week

**Spring Maintenance:** Fertilize.

**Summer Maintenance:** Remove individual stalks that have flowered at the soil line unless you want the plant to self-seed.

**Fall/Winter Maintenance:** Does not like to be wet in winter. Leave seedheads in place for overwintering birds. Divide clumps as needed and replant.

**Wildlife:** 



Photo credit: [https://commons.wikimedia.org/wiki/File:Penstemon\\_digitalis.jpg](https://commons.wikimedia.org/wiki/File:Penstemon_digitalis.jpg)

Eric Hunt, CC BY-SA 4.0 <<https://creativecommons.org/licenses/by-sa/4.0/>>, via Wikimedia Commons

## **False Sunflower (20)**

**Bot. Name** Heliopsis helianthoides

**Mature Size** 1-2 m H x 1 m W

**Bloom Time** July to October

**Sun Exposure** Full Sun

**Flower Colour** Yellow

**Watering Instructions:** These plants like to be kept consistently moist.

**Spring Maintenance:** Does not need to be fertilized. If desired, prune or pinch them back in mid-spring for a shorter sturdier plant.

**Summer Maintenance:** Deadheading spent flowers will keep new buds forming and give the plant a tidier appearance.

**Fall/Winter Maintenance:** In mid fall after plant has stopped blooming, remove seedheads to reduce self-seeding. Leave stems in place to provide winter cover to pollinators. Every 2 years, divide by cutting plant apart into halves or thirds and replanting.

**Wildlife:**    



False Sunflower Plant  
Photos by Kim Bonner



Common Flower Fly on False Sunflower

## Virginia Spiderwort (21)

**Bot. Name** Tradescantia virginiana  
**Mature Size** up to 1 m H x 0.5 m W  
**Bloom Time** May to July

**Sun Exposure** Full Sun  
**Flower Colour** Pink

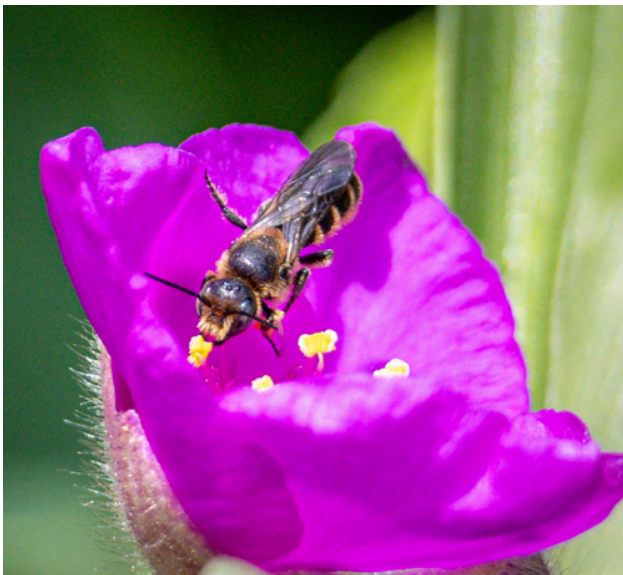
**Watering Instructions:** Water every few days during the hot summer months. If stems or leaves turn yellow, it's getting too much water.

**Spring Maintenance:** Fertilize once in spring.

**Summer Maintenance:** Stems should be trimmed back hard when blooming ends to 20-30 cm tall to encourage repeat blooms.

**Fall/Winter Maintenance:** At the end of fall, water well before the ground freezes. Every 2-3 years, divide the clump by splitting it into pieces that contain 4 to 6 shoots each with the roots attached and replant.

**Wildlife:**    



Scissor Bee on Spiderwort  
Photo by Don Taylor



Reddish-checked Beetle on Spiderwort  
Photo by Kim Bonner

## Autumn Joy Sedum (22)

**Bot. Name** Sedum 'Herbstfreude'

**Mature Size** 0.5 m H x W

**Bloom Time** Summer to Fall

**Sun Exposure** Full Sun

**Flower Colour** Pink, Red

**Watering Instructions:** Light watering once every 1 – 2 weeks. More frequent watering may cause root rot.

**Spring Maintenance:** Cut back dead flower stalks leaving stem stubble of varying height, from 20 to 60 cms, to provide nest cavities for bees. New growth will gradually hide the stem stubble. Do not fertilize.

**Summer Maintenance:** None

**Fall/Winter Maintenance:** Do not cut back. Leave the dried flowerheads in place for the birds to feed on over the winter and the tall pithy stems in place for use by nesting bees in spring. Every 3-4 years, just as new growth begins to appear, divide each clump into sections with a sharp knife. Each division should contain several shoots and a portion of the root system.

**Wildlife:** 



Brown-Belted Bumblebee on Sedum Flat-Tailed Leafcutter Bee on Sedum  
Photos by Kim Bonner

## **Prairie Smoke (23)**

<b>Bot. Name</b>	Geum triflorum	<b>Sun Exposure</b>	Full Sun
<b>Mature Size</b>	0.5 m H x W	<b>Flower Colour</b>	Pink to Maroon
<b>Bloom Time</b>	Spring to early Summer		

**Watering Instructions:** Water once a week if not receiving enough water from rainfall.

**Spring Maintenance:** Does not tolerate competition from other plants. Fertilize when new growth begins.

**Summer Maintenance:** Stalks can be cut back after the flowers are spent to tidy up the plant's appearance. Divide by root division when needed and replant.

**Fall/Winter Maintenance:** Does not like to be wet in the winter.

**Wildlife:** 🍁 🐰 🐝 esp. bumblebee queens



Prairie Smoke  
Photos by Kim Bonner

## Smooth Blue Aster (24)

**Bot. Name** Symphyotrichum laeve

**Mature Size** 0.5-1.5 m H x W

**Bloom Time** August to November

**Sun Exposure** Full Sun to Part Shade

**Flower Colour** Pale Purple

**Watering Instructions:** Dry

**Spring Maintenance:** Add compost. Does not like to be overcrowded so make sure it has room.

**Summer Maintenance:** Cut back to 1/3 of height once or twice in early summer to promote bushier growth and more blooms.

**Fall/Winter Maintenance:** Leave the seedheads for birds to enjoy over the winter. Move or divide when needed, just as plants start to grow, by creating 15-20 cm diameter divisions with a group of leaves and roots.

**Wildlife:** 



Photo credit: [https://commons.wikimedia.org/wiki/File:Symphyotrichum\\_laeve\\_93797924\\_\(cropped\).jpg](https://commons.wikimedia.org/wiki/File:Symphyotrichum_laeve_93797924_(cropped).jpg)  
Kathleen Houlahan Chayer, CCo, via Wikimedia Commons

## Little Bluestem Grass (25)

<b>Bot. Name</b>	Schizachyrium scoparium	<b>Sun Exposure</b>	Full Sun
<b>Mature Size</b>	1.5 m H x .6 m W	<b>Flower Colour</b>	N/A
<b>Bloom Time</b>	Summer, Fall		

**Watering Instructions:** Water lightly on a weekly basis. Do not overwater.

**Spring Maintenance:** Do not fertilize. Cut back after the apple blossoms fade to allow time for bumblebees to emerge in spring.

**Summer Maintenance:** None

**Fall/Winter Maintenance:** Do not cut back in the fall. Leave in place for overwintering bumblebees. To divide, cut the clump into 2-3 sections with a good number of roots and then replant.

**Wildlife:**     



Photo credit: <https://commons.wikimedia.org/wiki/File:SchizachyriumScoparium.jpg>  
Chhe, Public domain, via Wikimedia Commons

## **Black-eyed Susan (26)**

**Bot. Name** Rudbeckia hirta  
**Mature Size** 1 m H x 0.5 m W  
**Bloom Time** Summer to Fall

**Sun Exposure** Sun to Partial Sun  
**Flower Colour** Yellow

**Watering Instructions:** Moist to dry. Water from the base weekly, or more frequently during dry periods, especially if the plant is drooping.

**Spring Maintenance:** Apply light dressing of compost. Does not like to be overcrowded.

**Summer Maintenance:** If you see small, dark, often circular or angular spots on leaves, this is leaf spot. Remove the discoloured leaves and spray with a solution one teaspoon of baking soda in a quart of water, plus a few drops of liquid soap to help it adhere to the leaves. Thoroughly spray the foliage, ensuring both upper and lower surfaces are covered

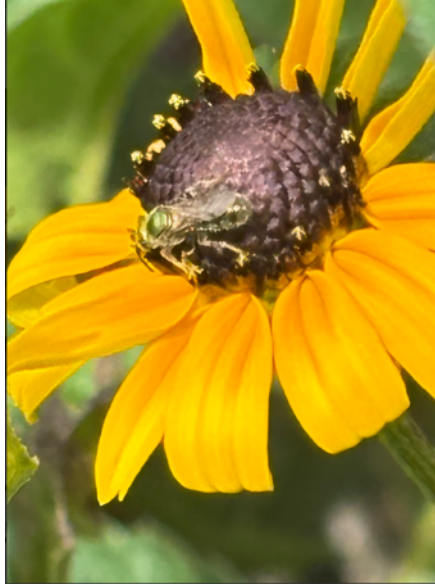
Cutting back after flowering may result in a second, smaller bloom. Cut the stem back to just beyond a leaf so you don't leave dead stems poking out.

**Fall/Winter Maintenance:** Leave some dried seedheads on the plants for the overwintering birds to enjoy. Divide by cutting the root ball in 2 and replant.

**Wildlife:** 



Black-Eyed Susan Plant  
Photos by Kim Bonner



Augochlorine Sweat Bee on Rudbeckia

## **Serviceberry (27)**

**Bot. Name** Amelanchier sp  
**Mature Size** up to 7 m H  
**Bloom Time** April

**Sun Exposure** Sun to Partial Shade  
**Flower Colour** White

**Watering Instructions:** Moist.

**Spring Maintenance:** Apply general-purpose fertilizer before growth starts. Remove dead or damaged branches.

**Summer Maintenance:** Apply/top-up mulch 5 cm deep around base to retain moisture but keep it 30-45 cms from the trunk. Water when top 8-10 cms of soil feels dry.

**Fall/Winter Maintenance:** Provide consistent watering through the fall, but less frequently than in the growing season.

**Wildlife:** 



[https://commons.wikimedia.org/wiki/File:Amelanchier\\_grandiflora2.jpg](https://commons.wikimedia.org/wiki/File:Amelanchier_grandiflora2.jpg)

Kurt Stüber [1], CC BY-SA 3.0 <<http://creativecommons.org/licenses/by-sa/3.0/>>, via Wikimedia Commons

## **False Indigo (28)**

**Bot. Name** Baptisia Australis  
**Mature Size** about 1 m H x W  
**Bloom Time** mid-May to mid-June

**Sun Exposure** Full Sun  
**Flower Colour** Blue

**Watering Instructions:** Moist to dry. Drought tolerant once established.

**Spring Maintenance:** No fertilizing needed. Cut back the old flowering stems to ground level now or in the fall after stems go black.

**Summer Maintenance:** Give it a modest shearing after flowering.

**Fall/Winter Maintenance:** No winterizing needed. Cut back the old flowering stems to ground level when the stems go black, or in the spring. Division is difficult and not advised.

**Wildlife:** 



False Indigo Plant  
Photo by Kim Bonner

## Common Milkweed (29)

<b>Bot. Name</b>	Asclepias syriaca	<b>Sun Exposure</b>	Full Sun
<b>Mature Size</b>	1-1.5 m H x 30-90 cm W	<b>Flower Colour</b>	Pink-purple
<b>Bloom Time</b>	mid to late summer		

**Watering Instructions:** Requires minimal watering. Cut back dead flower stalks leaving stem stubble of varying height, from 20 to 60 cms, to provide nest cavities for bees. New growth will gradually hide the stem stubble.

**Spring Maintenance:** No need to fertilize.

**Summer Maintenance:** Deadheading can encourage a second set of blooms. If desired, remove seedpods before they open to reduce spreading. Keep an eye out for milkweed aphids, bright yellow insects with black legs. If you see them, squish them by placing affected parts of the milkweed plant between thumb and forefinger and drag along the stem and/or snip off heavily infested leaves and stems.

**Fall/Winter Maintenance:** Their hollow stems are used by nesting bees, so leave in place. Leave seed heads for the birds and small animals who use their natural fibres and seed fluff in their nests. This plant does not like to be moved or divided due to its long taproot.

**Wildlife:** 



Common Milkweed Plant  
Photos by Kim Bonner



Monarch Butterfly Caterpillar on Milkweed

## Blanket Flower (30)

<b>Bot. Name</b>	Gaillardia	<b>Sun Exposure</b>	Full Sun
<b>Mature Size</b>	1 m H x .6-1 m W	<b>Flower Colour</b>	Multi-coloured
<b>Bloom Time</b>	summer till frost		

**Watering Instructions:** Water once or twice a week. Avoid overwatering. Drought-tolerant once established.

**Spring Maintenance:** Does not require fertilizer.

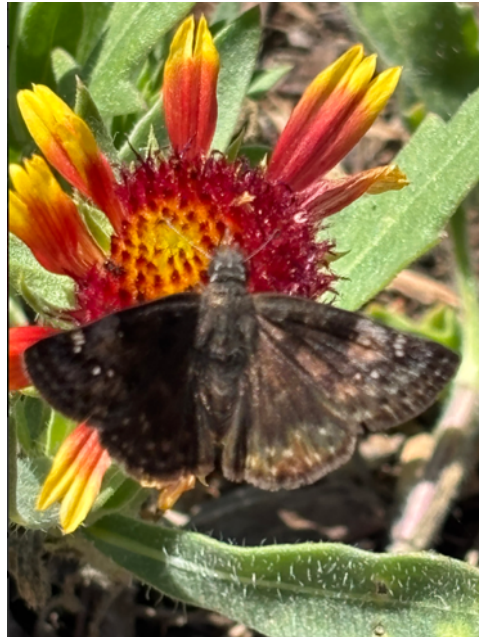
**Summer Maintenance:** Remove spent flowers by pinching them off or using pruners to cut them back to a leaf node. This encourages the plant to focus on producing new flowers rather than seeds.

**Fall/Winter Maintenance:** Remove spent flowers, dead or damaged stems, and cut back the entire plant after flowering in late summer or early fall. Lightly mulch roots with compost.

**Wildlife:** 



Blanket Flower Plant  
Photos by Kim Bonner



Indigo Duskywing Butterfly

## Red Columbine (31)

**Bot. Name** Aquilegia canadensis

**Mature Size** 0.6 m H x .3 m W

**Bloom Time** spring

**Sun Exposure** Part Shade to Full Sun

**Flower Colour** Red and Yellow

**Watering Instructions:** Water deeply, about 2 cms of water per week, at the base to prevent mildew.

**Spring Maintenance:** Add some compost.

**Summer Maintenance:** Deadhead spent blooms. If you notice leaf miner damage (disfigured leaves), cut back the affected foliage, and the plant will likely produce new growth. If mildew occurs, spray plants with a 40/60 ratio of milk to water on a sunny day. If you see green, caterpillar-like larvae of sawflies, remove them and discard.

**Fall/Winter Maintenance:** After the growing season, remove any dead foliage and cut the stalks to the ground. Mulching around the plant's crown with leaves or compost can provide extra protection against winter cold and help with drainage.

**Wildlife:** 



Eastern Yellowjacket on Red Columbine

Photo by Kim Bonner

## Bleeding Heart (32)

**Bot. Name** Dicentra spectabilis

**Mature Size** 1 m H x 1 m W

**Bloom Time** spring

**Sun Exposure** Part to Full Shade

**Flower Colour** Pink and white

**Watering Instructions:** Moderate. If leaves go yellow, reduce the amount of water.

**Spring Maintenance:** Add a little slow-release fertilizer if desired.

**Summer Maintenance:** If mildew occurs, spray plants with a 40/60 ratio of milk to water on a sunny day. May go dormant in the heat.

**Fall/Winter Maintenance:** Once the leaves have turned yellow, cut the leaves and stems back to 2.5 to 5 cms above the soil surface.

**Wildlife:**   



<https://commons.wikimedia.org/wiki/File:Dicentra-spectabilis.jpg> Wuzur, CC BY-SA 3.0  
<<https://creativecommons.org/licenses/by-sa/3.0/>>, via Wikimedia Commons

## Eastern Redbud (33) – Minnesota Strain

<b>Bot. Name</b>	Cercis canadensis	<b>Sun Exposure</b>	Sun to Part Shade
<b>Mature Size</b>	4.5-9 m H x 7.5-10.5m W	<b>Flower Colour</b>	Pink, purple
<b>Bloom Time</b>	mid- to late spring		

**Watering Instructions:** Remove tree wrap, if used. Prefers moist soil, moderately drought tolerant once established.

**Spring Maintenance:** Generally, not needed.

**Summer Maintenance:** N/A

**Fall/Winter Maintenance:** Until the eastern redbud's bark hardens and becomes rough, use a commercial-grade tree wrap in the winter. Leave seeds for overwintering birds.

**Wildlife:** 



[https://upload.wikimedia.org/wikipedia/commons/a/aa/Columbus\\_Wisconsin\\_Redbud\\_Tree\\_small.jpg](https://upload.wikimedia.org/wikipedia/commons/a/aa/Columbus_Wisconsin_Redbud_Tree_small.jpg) ,  
Downspec, CC BY-SA 4.0 < <https://creativecommons.org/licenses/by-sa/4.0/deed.en>>, via Wikimedia Commons

## Ruby Summersweet (34)

<b>Bot. Name</b>	Clethra alnifolia	<b>Sun Exposure</b>	Sun to part shade
<b>Mature Size</b>	1-1.5 m H x 1.5-2.5 m W	<b>Flower Colour</b>	Pink
<b>Bloom Time</b>	mid- to late summer		

**Watering Instructions:** Prefers moist conditions.

**Spring Maintenance:** Pull back mulch from crown. Prune in late winter/early spring, before buds appear. Thin centre of plant for better air flow. Add slow-release shrub fertilizer.

**Summer Maintenance:** Check for spider mites. Blast them off with water.

**Fall/Winter Maintenance:** Add compost to increase soil acidity. Mulch around roots. Leave seeds for overwintering birds.

**Wildlife:** 



[https://upload.wikimedia.org/wikipedia/commons/2/25/Question\\_Mark\\_Polygonia\\_interrogationis\\_Clethra\\_Flower\\_2000px.jpg](https://upload.wikimedia.org/wikipedia/commons/2/25/Question_Mark_Polygonia_interrogationis_Clethra_Flower_2000px.jpg), Dere3k Ramsay, CC BY-SA 3.0 <<https://creativecommons.org/licenses/by-sa/3.0/>>, via Wikimedia Commons

# Appendix A - Resources

All required permissions were obtained as of April 7, 2025.

Ontario Horticultural Association (2010). *A Guide to Creating a Pollinator Patch*. Retrieved 24 Jan 2025.  
<https://gardenontario.org/wp-content/uploads/roadsidesguide.pdf>

David Suzuki Foundation. *Help bring butterflies home to your garden* / St Lawrence Lowlands EcoZone. Retrieved 10 Mar 2025.  
<https://davidsuzuki.org/wp-content/uploads/2023/05/DSF-ON-QC-stlawrence-lowlands-plant-list.pdf>

Xerces Society. *How to Create Habitat for Stem-Nesting Bees*. Retrieved 24 Jan 2025. Creative Commons Attribution-NonCommercial 3.0 Unported (CC BY-NC 3.0) license.  
[https://xerces.org/sites/default/files/publications/22-005\\_01\\_web-press.pdf](https://xerces.org/sites/default/files/publications/22-005_01_web-press.pdf)

Xerces Society (2023). *Native Plants for Pollinators & Beneficial Insects*. Retrieved 1 Feb 2025.  
[https://xerces.org/sites/default/files/publications/22-021\\_01\\_NPPBI—GreatLakes\\_web.pdf](https://xerces.org/sites/default/files/publications/22-021_01_NPPBI—GreatLakes_web.pdf)

Canadian Wildlife Federation, *Native Plant Encyclopedia*. Retrieved 1 Feb 2025.  
<https://cwf-fcf.org/en/resources/encyclopedias/native-plant-encyclopedia/?src=menu>

Galiea, Mary B and Wojcik, Victoria. *Pollinator Partnership Canada, Selecting Plants for Pollinators*. Retrieved 24 Jan 2025.  
<https://www.pollinator.org/pollinator.org/assets/generalFiles/StLawrence-2017.pdf>

LaVaute, Kelly (2024, Nov 28). *Garden for Wildlife. Creating a Thriving Habitat: Supporting Frogs and Wildlife with a Native Plant Garden at Home*. Retrieved 1 Feb 2025.  
<https://gardenforwildlife.com/blogs/learning-center/creating-a-thriving-habitat-supporting-frogs-and-wildlife-with-a-native-plant-garden-at-home?srltid=AfmBOorYtWdXscXVcdDovuGPi5Hjki-UPMtOHTxeewxoECoXUaibOEFh>

# Appendix B - Maintenance Schedule

## Spring

- 1. Geranium – add compost.
- 2. Swamp Milkweed – cut back dead flower stalks leaving stem stubble of varying heights from 20 to 60 cms.
- 3. Swamp Rose Mallow – cut back dead flower stalks leaving stem stubble of varying heights from 20 to 60 cms.
- 4. Sundrops – nothing required.
- 5. New England Aster – add compost. Cut back dead flower stalks leaving stem stubble of varying heights from 20 to 60 cms.
- 6. Ohio Goldenrod – cut back dead flower stalks leaving stem stubble of varying heights from 20 to 60 cms.
- 7. Prairie Coneflower– cut back in early spring.
- 8. Wild Bergamot – add compost. Cut back dead flower stalks leaving stem stubble of varying heights from 20 to 60 cms.
- 9. Chives – Add compost.
- 10. Lanceleaf Coreopsis – cut back to 15 cm in spring before new growth begins.
- 11. Anise Hyssop – add compost. Cut back dead flower stalks leaving stem stubble of varying heights from 20 to 60 cms.
- 12. Purple Coneflower – add compost. Cut back dead flower stalks leaving stem stubble of varying height, from 20 to 60 cms.
- 13. Garlic Chives – add compost.
- 14. Eastern Pasqueflower – apply a light application of fertilizer. Cut back to ground before new growth emerges.
- 15. Dill - pluck buds and prune upper leaves for a bushier plant.
- 16. Dense Blazing Star – cut back dead flower stalks leaving stem stubble of varying height, from 20 to 60 cms.
- 17. Butterfly Milkweed – cut back dead flower stalks leaving stem stubble of varying height, from 20 to 60 cms.
- 18. Catmint – n/a
- 19. Foxglove Beardtongue – fertilize with compost.
- 20. False Sunflower – pinch in mid-spring for a sturdier plant.
- 21. Virginia Spiderwort – fertilize with compost.

- 22. Autumn Joy Sedum – cut back dead flower stalks leaving stem stubble of varying height, from 20 to 60 cms.
- 23. Prairie Smoke – fertilize when new growth begins. Make sure it isn't crowded by other plants.
- 24. Smooth Blue Aster- add compost.
- 25. Little Bluestem – cut back after apple blossoms in the area have faded.
- 26. Black-eyed Susan – add compost.
- 27. Serviceberry – fertilize before new growth starts.
- 28. False Indigo – cut back old flowering stems to ground level.
- 29. Zinnia – sow seeds/plant seedlings after danger of frost has passed.
- 31. Red Columbine – add some compost.
- 32. Bleeding Heart – add some compost.
- 33. Eastern Redbud – N/A
- 34. Summersweet - Pull back mulch from crown. Prune in late winter/early spring, before buds appear. Thin centre of plant for better air flow. Add slow-release shrub fertilizer.

## Summer

- 1. Geranium – after flowering, shear plants back to 7-12 cm to encourage reblooming.
- 2. Swamp Milkweed – deadhead spent flower heads in early summer to encourage reblooming.
- 3. Swamp Rose Mallow – pinch back growing tips when they reach 20 cm and again at 30 cm if bushy plants are desired. Fertilize monthly.
- 5. New England Aster – pinch back stems every few weeks, but stop before end of July.
- 6. Ohio Goldenrod – deadheading spent flowers will prolong blooms into the fall.
- 8. Wild Bergamot – deadhead first set of faded blooms to encourage reblooming.
- 9. Chives – once flowers have faded, cut plant down by ½.
- 10. Lanceleaf Coreopsis – deadhead spent blooms to control self-seeding. Cut back hard if too sprawly.

- 11. Anise Hyssop – prune to 1/3 plant height after flowering.
- 12. Purple Coneflower – deadhead spent flowers in June and July. Thin out stems if needed for air circulation.
- 13. Garlic Chives – when flowers are faded cut down plant by half.
- 14. Eastern Pasqueflower – n/a.
- 15. Dill – Leave some flowers and seedheads for reseeding and deadhead the rest.
- 16. Dense Blazing Star – n/a.
- 17. Butterfly Milkweed – deadhead spent flower heads in early summer to encourage reblooming.
- 18. Catmint – once stems become leggy and flop open, give plants a good shearing for a 2nd bloom.
- 19. Foxglove Beardtongue – remove individual stalks that have flowered unless you want the plant to self-seed.
- 20. False Sunflower – deadheading spent flowers will keep new buds forming.
- 21. Virginia Spiderwort – when blooming finishes, cut back to 20-30 cms tall to encourage repeat blooming.
- 23. Prairie Smoke – cut stalks back after flowering. Divide by root division when needed.
- 24. Smooth Blue Aster – cut back to 1/3 of height once or twice in the summer to promote more blooms.
- 25. Little Bluestem – none.
- 26. Black-eyed Susan – cut back after flowering to encourage reblooming. If you see black spots on the leaves, see the plant description on how to control it
- 27. Serviceberry – apply/top-up mulch 5 cm deep around base to retain moisture but keep it 30-45 cms from the trunk.
- 28. False Indigo – give it a modest shearing after flowering.
- 29. Zinnia – apply balanced fertilizer throughout the growing season.
- 30. Blanket Flower – deadhead spent blooms to encourage reflowering
- 31. Red Columbine – deadhead spent blooms. If needed, treat for mildew, remove leaves damaged by leaf miners, and dispose of sawfly larvae.

- 32. Bleeding Heart – treat for mildew, if needed.
- 33. Eastern Redbud – N/A
- 34. Summersweet – check for spider mites. Blast them with water.

## Late Fall

- 1. Geranium – cut off stems to just above ground level.
- 2. Swamp Milkweed – leave stems and seedheads in place.
- 3. Swamp Rose Mallow – leave stems in place.
- 4. Sundrops – leave seedheads in place.
- 5. New England Aster – leave stems in place. Remove all but a few seedheads.
- 6. Ohio Goldenrod – leave stems in place. Remove all but a few seedheads.
- 7. Prairie Coneflower – leave stems and seedheads in place.
- 8. Wild Bergamot – leave stems in place. Remove all but a few seedheads.
- 9. Chives – once dormant, cut back to ground level.
- 10. Lanceleaf Coreopsis – n/a
- 11. Anise Hyssop – leave stems in place. Dead head blooms to prevent self-seeding. Give it a good watering before it dies back.
- 12. Purple Coneflower – leave stems and flower heads in place.
- 13. Garlic Chives – once dormant, cut back to ground level.
- 14. Eastern Pasqueflower – leave stems and seedheads in place.
- 15. Dill – tidy up but leave some seedheads in place for reseeding.
- 16. Dense Blazing Star – leave stems and seedheads in place.
- 17. Butterfly Weed – leave stems and seedheads in place.
- 18. Catmint – cut down to 10-15 cms.
- 19. Foxglove Beardtongue – Leave stems and seedheads in place.
- 20. False Sunflower – deadhead but leave stems in place.
- 21. Virginia Spiderwort – water well before the ground freezes.
- 22. Autumn Joy Sedum – leave stems and flowers in place.
- 24. Smooth Blue Aster – leave a few seedheads in place.
- 23. Prairie Smoke – does not like to be wet in winter.
- 25. Little Bluestem – leave stems in place.
- 26. Black-eyed Susan – leave a few seedheads in place.
- 27. Serviceberry – reduce amount of water in the fall.

- 28. False Indigo – n/a
- 29. Zinnia Profusion - dies off with first hard frost.
- 30. Blanket Flower – cut back. Mulch roots lightly with compost.
- 31. Red Columbine – remove dead foliage and cut stalks back to the ground.
- 32. Bleeding Heart - once the leaves have turned yellow, cut the leaves and stems back to 2.5 to 5 cms above the soil surface
- 33. Eastern Redbud – until the eastern redbud's bark hardens and becomes rough, use a commercial-grade tree wrap in the winter. Leave seeds for birds.
- 34. Summersweet – leave seeds for birds. Mulch around the crown.

Be sure to check out our website ([bathgardeningclub.ca](http://bathgardeningclub.ca)), our Facebook page (Bath Gardening and Horticultural Society) and the Sunday Market in Bath (<https://sundaymarketinbath.com>).